

# Sherwood

## Area Committee Report

Unofficial September 2013  
Data

# Ward Priorities

Theme	Priorities	Key Actions	Outcome	Lead
Safer	<p>Ensure a close working relationship with Police and other partners to reduce crime</p> <p>Ensure the Police Contact Point is open in Sherwood district centre</p> <p>Grass and bin fires on Edwards Lane</p>	<p>Hold NAT (Neighbourhood Action Team) meetings</p> <p>Open contact point</p> <p>NCH, Police and Fire Service to work closely on prevention</p>	<p>Productive monthly meetings held</p> <p>Contact point open</p> <p>All partners aware of hotspots</p>	<p>NDO</p> <p>Police</p> <p>Fire Service</p>
Families	<p>Support for Valley Road leisure and recreation facilities / project</p> <p>Protect and look to extend Library services in Sherwood</p> <p>Improve youth and play facilities in area and support the re-use of Sherwood Play Centre</p>	<p>Complete project. Work on crossing has started.</p> <p>Library to increase range of activities</p> <p>Continue existing provision and support more which fills the gaps</p>	<p>Crossing has been approved and is being installed</p> <p>Activities increased</p> <p>Play schemes running during the school holidays.</p>	<p>Traffic Management / NDO</p> <p>Libraries</p> <p>Communities and Families</p>

Theme	Priorities	Key Actions	Outcome	Lead
Neighbourhoods	<p>Ensure Edwards Lane and Sherwood estate remain 3 star estates</p> <p>Parking on roads around City Hospital</p> <p>Champion local events and facilitate community events like the Sherwood Festival and Arts Week</p> <p>Dog Fouling near to Haydn School</p> <p>Monitor known fly tipping sites</p>	<p>NCH to undertake informal estate inspections</p> <p>Assessment of Costock Avenue area</p> <p>Sherwood Arts Week and Sherwood Festival 2013</p> <p>Involve school / CPO targeted project</p> <p>Involve residents and businesses</p>	<p>Police, NCH and NDO have worked closely to resolve any problems</p> <p>Residents have been informed of the survey results. No further action until reponse received from residents.</p> <p>Plans for 2014 are underway.</p> <p>Targeted project complete.</p> <p>Ongoing. Top 5 grot spots identified</p>	<p>NCH</p> <p>Traffic Management NDO</p> <p>CPO Env Health</p>
Health	<p>Form a change makers team</p> <p>Support healthy lifestyle ideas in the area</p>	<p>Team to be formed to attend events</p> <p>Promote small grants available</p>	<p>Promoted health activities at Sherwood Community Centre</p> <p>Pamper Day</p> <p>Grant applications received and currently being reviewed</p>	<p>Health promotion</p> <p>Health promotion</p>
Working	<p>Youth Unemployment</p> <p>Support Sherwood district shopping centre</p>	<p>Childrens Centre and Childrens Services to offer support</p> <p>Sherwood Craft Market</p> <p>Sherwood Art Week / Festival involving local businesses</p> <p>Keep it in Carrington and</p> <p>Keep it in Sherwood campaigns</p>	<p>Additional support offered via Princes Trust at Sherwood Community Centre</p> <p>Business happy with opportunities at Sherwood Festival</p> <p>Campaigns ongoing</p> <p>Apprentice opportunity</p>	<p>Princes Trust Community and Families NDO</p> <p>Markets and Fairs</p>

# Community Engagement

## Ward Walks taken place in Quarter 4

Area/Estate	Date/Time	Meeting Point
Winchester Street area	14 <sup>th</sup> November 9.30am	Winchester Street car park
Danethorpe Vale	5 <sup>th</sup> December 9.30am	Danethorpe Vale
Elmswood Gardens	9 <sup>th</sup> January 9.30am	Elmswood Gardens/Mansfield Road
Carrington	6 <sup>th</sup> February 9.30am	Corner of Church Drive & Mansfield Road

## Community Meetings

Group	Date	Venue
Carrington Resident Group	Second Monday in month	Gladstone Public House
ELETRA	First Monday in month	Edwards Lane Community Centre
Edwards Lane Community Association	Monthly – dates and times vary	Edwards Lane Community Centre
Sherwood Community Centre	Monthly – dates and times vary	Sherwood Community Centre

# Community Engagement

## Events Delivered

Event	Lead Partners	Date/Time	Venue
Christmas Lights Switch On	NDOs	27 <sup>th</sup> Nov 13	Sherwood Town Centre
Budget Consultation Part 2	Sherwood Ward Councillors/ NDOs	30 <sup>th</sup> Jan 14	ICCA, Hucknall Road

## Future Events and Activities Planned

Event	Lead Partners	Date/Time	Venue
Ward Walk – Watcombe Circus – Crossman Street	NDOs / Neighborhood Police Team / NCH	6 <sup>th</sup> March 9.30am	Meet corner of Leonard Ave/Hucknall Road
Ward Walk – Perry Road – Valley Road	NDOs / Neighborhood Police Team / NCH	1 <sup>st</sup> April 4.30pm	Meet corner of Perry Road and Valley Road
Ward Walk – Mosdale Road – Bedale Road	NDOs / Neighborhood Police Team / NCH	27 <sup>th</sup> Nov 4.30pm	Meet corner of Ribblesdale Road and Edwards Lane

# Finance

## **Ward Councillor Budgets**

Total Amount allocated this period £5096

Budget Remaining Unallocated £5060 (inc of 2012-13 allocation)

## **Area Capital Fund**

Total Amount allocated this period £3,000

Budget Remaining Unallocated £96,409 (inc of 2012-13 allocation)

## **Others – Section 106, NCH Environmentals, Other Funding**

None this period

# Ward Summary

Crime data is shown below for both the current month compared to last year and the year to date.

Ward	Type	Dec-12	Dec-13	Volume +/-	% Change	YTD 12-13	YTD 13-14	Volume +/-	% Change
SHERWOOD	Autocrime	12	7	-5	-42%	79	88	9	11%
	Burglary	8	17	9	113%	57	92	35	61%
	Burglary Other	1	3	2	200%	51	41	-10	-20%
	Damage	10	6	-4	-40%	120	101	-19	-16%
	Drugs		5	5		27	38	11	41%
	Fraud	1		-1	-100%	14	4	-10	-71%
	Other	1		-1	-100%	18	22	4	22%
	Personal Robbery	6	4	-2	-33%	16	28	12	75%
	Robbery Business			0			3	3	
	Sexual	2	2	0	0%	8	13	5	63%
	Theft	41	30	-11	-27%	245	337	92	38%
	Threats	3	1	-2	-67%	21	29	8	38%
	Violence	14	20	6	43%	123	189	66	54%
	<b>SHERWOOD Total</b>		<b>99</b>	<b>95</b>	<b>-4</b>	<b>-4%</b>	<b>779</b>	<b>985</b>	<b>206</b>
<b>ASB</b>		<b>34</b>	<b>25</b>	<b>-9</b>	<b>-26%</b>	<b>351</b>	<b>388</b>	<b>37</b>	<b>11%</b>

The summary below shows only year to date figures, and in the case of public realm and fire data, will generally be a month in arrears.

Type	YTD 12-13	YTD 13-14	Volume +/-	% Change
Domestic Violence Crime	43	74	31	72%
Night Time Economy Violence	27	38	11	41%
Hate Crime	4	8	4	100%
Deliberate Fires	9	15	6	67%
Cleanliness (Average Score)	85	89	3	4%
Graffiti	58	48	-10	-17%
Fly-Tipping	123	192	69	56%

# Priorities & Targets

The Central Locality has targets to reduce Dwelling Burglary, Shop Theft and Violence. The Locality's performance against Targets is set out below. This shows that the target is being met for Dwelling Burglary, but not for Shop Theft or Violent Crime.

Locality Target Summary																
Locality	Crime Type	Apr-13	May-13	Jun-13	Jul-13	Aug-13	Sep-13	Oct-13	Nov-13	Dec-13	Jan-14	Feb-14	Mar-14	YTD	Proposed year end Position	+/- Target Position
Central	Dwelling Burglary	96	77	71	65	56	59	55	79	69	75	75	75	627	890	-38
	Shop Theft	88	71	96	55	54	27	54	52	57	40	40	40	554	644	30
	Violence	96	114	115	130	130	110	145	109	113	84	84	84	1062	1173	141



# Ward Performance

The table below shows how Sherwood is performing year to date for All Crime and ASB in comparison to the other wards on the Division. High Impact wards are highlighted in blue.

Sherwood has the greatest year to date increase in both volume and percentage for All Crime across the Division. The ward is also seeing an increase in ASB.

Dec 2013		All Crime				ASB			
Locality	Ward	YTD 12/13	YTD 13/14	Change	% Change	YTD 12/13	YTD13/14	Change	% Change
Central	ARBORETUM	968	1109	141	14.6%	712	757	45	6.3%
	BERRIDGE	1149	1171	22	1.9%	821	737	-84	-10.2%
	DUNKIRK & LENTON	807	744	-63	-7.8%	348	273	-75	-21.6%
	RADFORD & PARK	1119	1150	31	2.8%	605	682	77	12.7%
	SHERWOOD	780	985	205	26.3%	351	388	37	10.5%
	WOLLATON EAST & LENTON ABBEY	330	354	24	7.3%	110	117	7	6.4%
	WOLLATON WEST	377	430	53	14.1%	140	138	-2	-1.4%
<b>Central Total</b>		<b>5530</b>	<b>5943</b>	<b>413</b>	<b>7.5%</b>	<b>3087</b>	<b>3092</b>	<b>5</b>	<b>0.2%</b>
City	CITY CENTRE	6138	5638	-500	-8.1%	2160	1872	-288	-13.3%
North	ASPLEY	1326	1194	-132	-10.0%	755	704	-51	-6.8%
	BASFORD	903	940	37	4.1%	542	511	-31	-5.7%
	BESTWOOD	734	808	74	10.1%	491	643	152	31.0%
	BILBOROUGH	968	956	-12	-1.2%	615	611	-4	-0.7%
	BULWELL	1438	1428	-10	-0.7%	919	822	-97	-10.6%
	BULWELL FOREST	689	735	46	6.7%	345	403	58	16.8%
	LEEN VALLEY	547	583	36	6.6%	304	309	5	1.6%
<b>North Total</b>		<b>6605</b>	<b>6644</b>	<b>39</b>	<b>0.6%</b>	<b>3971</b>	<b>4003</b>	<b>32</b>	<b>0.8%</b>
South	BRIDGE	763	648	-115	-15.1%	441	414	-27	-6.1%
	CLIFTON NORTH	527	545	18	3.4%	296	313	17	5.7%
	CLIFTON SOUTH	747	578	-169	-22.6%	458	454	-4	-0.9%
	DALES	790	877	87	11.0%	529	613	84	15.9%
	MAPPERLEY	837	901	64	7.6%	467	448	-19	-4.1%
	ST ANNS	847	941	94	11.1%	822	801	-21	-2.6%
<b>South Total</b>		<b>4511</b>	<b>4490</b>	<b>-21</b>	<b>-0.5%</b>	<b>3013</b>	<b>3043</b>	<b>30</b>	<b>1.0%</b>
<b>Division</b>		<b>22784</b>	<b>22715</b>	<b>-69</b>	<b>-0.3%</b>	<b>12231</b>	<b>12010</b>	<b>-221</b>	<b>-1.8%</b>
<b>Previous Month's Performance</b>					<b>1.0%</b>				<b>-2.8%</b>

# Exception Reporting

## Dwelling Burglary

Dwelling Burglary is showing a considerably increase for December and the year to date. There were 17 offences in December which is the highest so far for the year to date. The offences appear to be spread across the ward area.

## Theft

Theft is the greatest volume offence group on the ward area, although seeing a reduction in December compared to the same month last year, there has been an increase year to date. The table below shows the individual categories within this crime group. Also shown is the percentage of offences where mobile phones were targeted. It is clear from the table that the vast majority of offences relate to shop theft.

Offence	Apr	May	Jun	Jul	Aug	Sep	Oct	Nov	Dec	Total
THEFT FROM SHOP	20	28	45	19	23	9	20	22	23	209
THEFT OTHER	10	11	17	8	9	11	6	11	5	88
THEFT IN DWELLING OTHER THAN AUTO MACHINE OR METER	4	2	1	3	1	1	1	2	1	16
THEFT OR UNAUTHORISED TAKING OF PEDAL CYCLE	1	2	4	1	2	2	2	1		15
THEFT FROM PERSON			1	1	2		1	1	1	7
THEFT BY EMPLOYEE	1						1			2
<b>Total</b>	<b>36</b>	<b>43</b>	<b>68</b>	<b>32</b>	<b>37</b>	<b>23</b>	<b>31</b>	<b>37</b>	<b>30</b>	<b>337</b>
<b>% Mobile phone theft</b>	<b>8%</b>	<b>5%</b>	<b>10%</b>	<b>16%</b>	<b>3%</b>	<b>17%</b>	<b>6%</b>	<b>5%</b>	<b>0%</b>	<b>8%</b>

# Exception Reporting (continued)

## Violence

Violence is another high volume category on the ward, and has seen an increase in December and year to date compared to the same period last year. The table below shows the individual crime categories within the group and also shows the percentage of offences that relate to Domestic Violence. 5 of the offences in December occurred at Nottingham Prison.

Offence	Apr	May	Jun	Jul	Aug	Sep	Oct	Nov	Dec	Total
ASSAULT WITH INJURY	10	18	11	18	20	9	19	12	12	129
COMMON ASSAULT	5	5	3	6	3	5	5	3	7	42
ASSAULT WITH INTENT TO CAUSE SERIOUS HARM					2	2	3	1	1	9
ASSAULT ON A CONSTABLE				3						3
RACIALLY OR RELIGIOUSLY AGGRAVATED ASSAULT WITH INJURY				1		1				2
CRUELTY TO CHILDREN/YOUNG PERSONS				1	1					2
RACIALLY/RELIGIOUSLY AGGRAVATED HARASSMENT INC SEC 4 AND 5 POA			1							1
RACIALLY/RELIGIOUSLY AGGRAVATED COMMON ASSAULT					1					1
<b>Grand Total</b>	<b>15</b>	<b>23</b>	<b>15</b>	<b>29</b>	<b>27</b>	<b>17</b>	<b>27</b>	<b>16</b>	<b>20</b>	<b>189</b>
<b>% which is Domestic Related</b>	<b>53%</b>	<b>52%</b>	<b>27%</b>	<b>31%</b>	<b>52%</b>	<b>12%</b>	<b>30%</b>	<b>31%</b>	<b>25%</b>	<b>35%</b>

## All Crime

The ward has a higher than average crime rate compared to the rest of the Division across all crime categories shown but a lower than average rate of ASB. The full tables can be found on page 7 and 8.

# Crime Figures

Crime Types by Rate (per 1000 of population) of the 20 Wards – Figures are Year to Date 2013/14

WARD	ALL CRIME	AUTOCRIME	BURGLARY	DAMAGE	PERSONAL ROBBERY	THEFT	VIOLENCE
ARBORETUM	99.06	5.74	9.60	12.56	5.47	15.52	24.85
ASPLEY	67.76	5.96	5.45	11.80	0.91	10.55	17.25
BASFORD	57.44	7.10	5.43	9.87	1.23	10.43	13.39
BERRIDGE	62.46	7.24	5.84	9.17	1.07	14.21	12.49
BESTWOOD	48.23	3.46	5.19	9.91	1.07	6.21	11.58
BILBOROUGH	56.87	6.73	5.36	10.24	0.95	8.99	12.68
BRIDGE	64.90	3.59	1.64	8.31	1.23	26.04	11.69
BULWELL	88.38	5.69	5.08	18.51	1.92	21.97	17.21
BULWELL FOREST	53.84	3.53	4.04	10.06	1.47	14.25	10.65
CLIFTON NORTH	41.43	3.03	4.11	8.69	1.16	5.66	8.46
CLIFTON SOUTH	41.44	2.51	5.31	7.10	0.86	7.31	10.76
DALES	53.28	4.56	2.73	10.08	0.49	11.36	11.54
DUNKIRK AND LENTON	67.95	10.26	6.68	6.41	0.73	21.43	9.43
LEEN VALLEY	54.48	4.58	5.61	8.78	1.68	11.12	10.00
MAPPERLEY	56.42	7.64	4.48	7.83	0.57	10.73	10.67
RADFORD AND PARK	58.59	8.17	6.43	5.41	1.89	16.69	8.93
SHERWOOD	62.09	5.64	5.97	6.49	1.82	21.41	11.16
ST ANNS	66.80	4.65	3.79	12.10	3.79	7.30	18.61
WOLLATON EAST AND LENTON ABBEY	35.57	3.11	5.73	3.62	0.30	12.86	3.52
WOLLATON WEST	29.03	4.75	4.14	3.39	0.27	7.67	2.85
<b>WARD AVERAGE</b>	<b>58.30</b>	<b>5.40</b>	<b>5.13</b>	<b>9.02</b>	<b>1.44</b>	<b>13.09</b>	<b>11.89</b>

# All ASB Figures

All ASB by Rate (per 1000 of population) of the 20 Wards)

WARD	RATE (PER 1000 OF POP.) Dec 2013
ARBORETUM	6.82
ASPLEY	3.40
BASFORD	3.64
BERRIDGE	2.36
BESTWOOD	3.64
BILBOROUGH	3.22
BRIDGE	3.08
BULWELL	3.65
BULWELL FOREST	2.79
CLIFTON NORTH	2.25
CLIFTON SOUTH	2.01
DALES	3.95
DUNKIRK & LENTON	1.47
LEEN VALLEY	3.92
MAPPERLEY	2.02
RADFORD & PARK	2.14
SHERWOOD	1.62
ST ANNS	5.23
WOLLATON EAST & LENTON ABBEY	0.80
WOLLATON WEST	0.47
<b>WARD AVERAGE</b>	<b>2.92</b>

# Fire

Table: Volume of Deliberate Primary and Secondary Fires by Ward

Fire Data									
Locality	Ward	Nov-12	Nov-13	Volume +/-	% Change	Ytd 12-13	Ytd 13-14	Volume +/-	% Change
Central	Arboretum	2	0	-2	-100%	13	18	5	38%
	Berridge	7	3	-4	-57%	35	29	-6	-17%
	Dunkirk and Lenton	1	2	1	100%	5	7	2	40%
	Radford and Park	1	1	0	0%	24	14	-10	-42%
	Sherwood	0	3	3	29900%	9	15	6	67%
	Wollaton East and Lenton Abbey	0	0	0	-100%	6	6	0	0%
	Wollaton West	0	0	0	-100%	2	3	1	50%
<b>Central Locality</b>		<b>11</b>	<b>9</b>	<b>-2</b>	<b>-18%</b>	<b>94</b>	<b>92</b>	<b>-2</b>	<b>-2%</b>
North	Aspley	1	0	-1	-100%	45	34	-11	-24%
	Basford	4	2	-2	-50%	40	26	-14	-35%
	Bestwood	5	0	-5	-100%	31	37	6	19%
	Bilborough	3	2	-1	-33%	34	19	-15	-44%
	Bulwell	6	7	1	17%	60	56	-4	-7%
	Bulwell Forest	0	1	1	9900%	28	12	-16	-57%
	Leen Valley	3	2	-1	-33%	20	20	0	0%
<b>North Locality</b>		<b>22</b>	<b>14</b>	<b>-8</b>	<b>-36%</b>	<b>258</b>	<b>204</b>	<b>-54</b>	<b>-21%</b>
South	Bridge	0	2	2	19900%	10	14	4	40%
	Clifton North	1	2	1	100%	10	9	-1	-10%
	Clifton South	2	1	-1	-50%	17	25	8	47%
	Dales	1	1	0	0%	6	13	7	117%
	Mapperley	2	0	-2	-100%	14	10	-4	-29%
	St. Anns	2	1	-1	-50%	22	23	1	5%
<b>South Locality</b>		<b>8</b>	<b>7</b>	<b>-1</b>	<b>-13%</b>	<b>79</b>	<b>94</b>	<b>15</b>	<b>19%</b>
<b>Division</b>		<b>41</b>	<b>30</b>	<b>-11</b>	<b>-27%</b>	<b>431</b>	<b>390</b>	<b>-41</b>	<b>-10%</b>

Note: Where ward boundaries overlap with the City Centre fires that occurred in the City Centre have been **included** in the ward figures.

# Community Protection

*Data has been received from Community Protection and where postcodes have been listed these have been geo-coded and mapped to determine the Ward. All addresses relate to the address of the Perpetrator.*

*FPNs are not currently available at ward level.*

**In December 2013 there were no orders issued:**

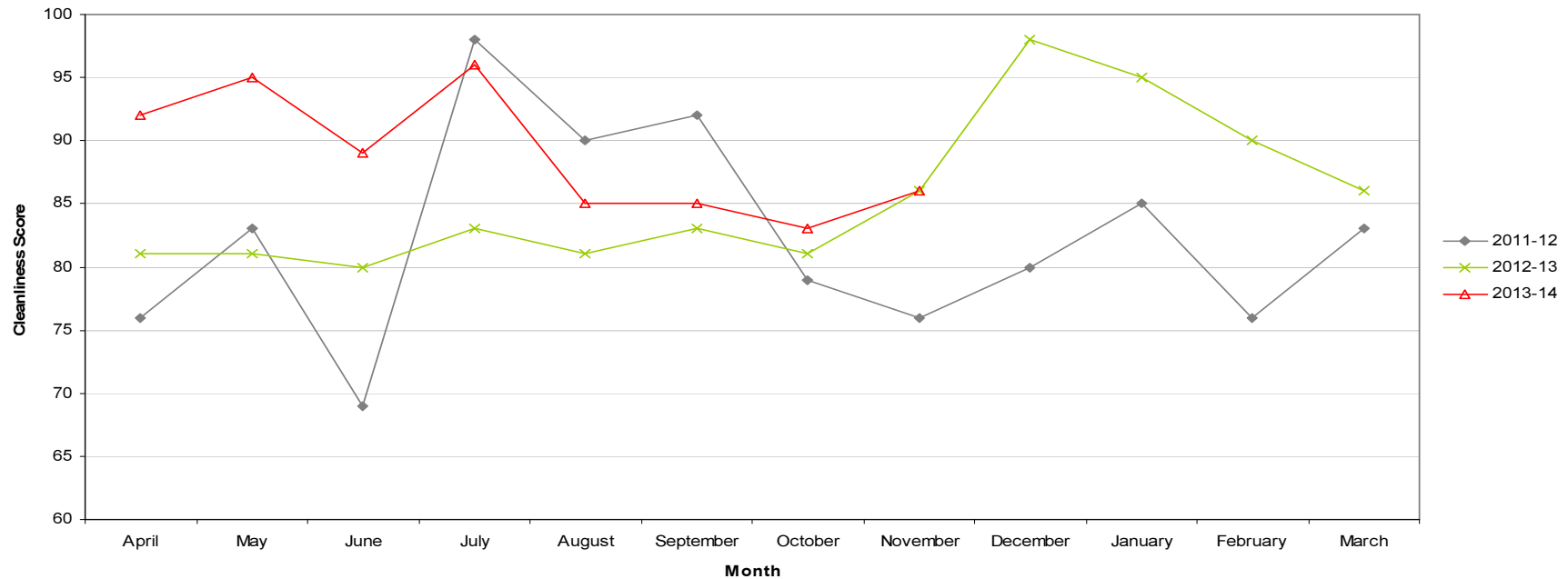
*For enquiries regarding Community Protection court outcomes please contact the Operational Manager for the locality.*

# Cleanliness Index

Cleanliness Index Score	<b>86</b>
Performance compared to previous year	⚡
Performance compared to neighbourhoods target of 86	⚡

- All data refers to a comparison with the previous year's month
- It is proposed that performance over time graphs be used for each indicator
- Historic data for comparison is not available for dog fouling

Cleanliness Index - Sherwood



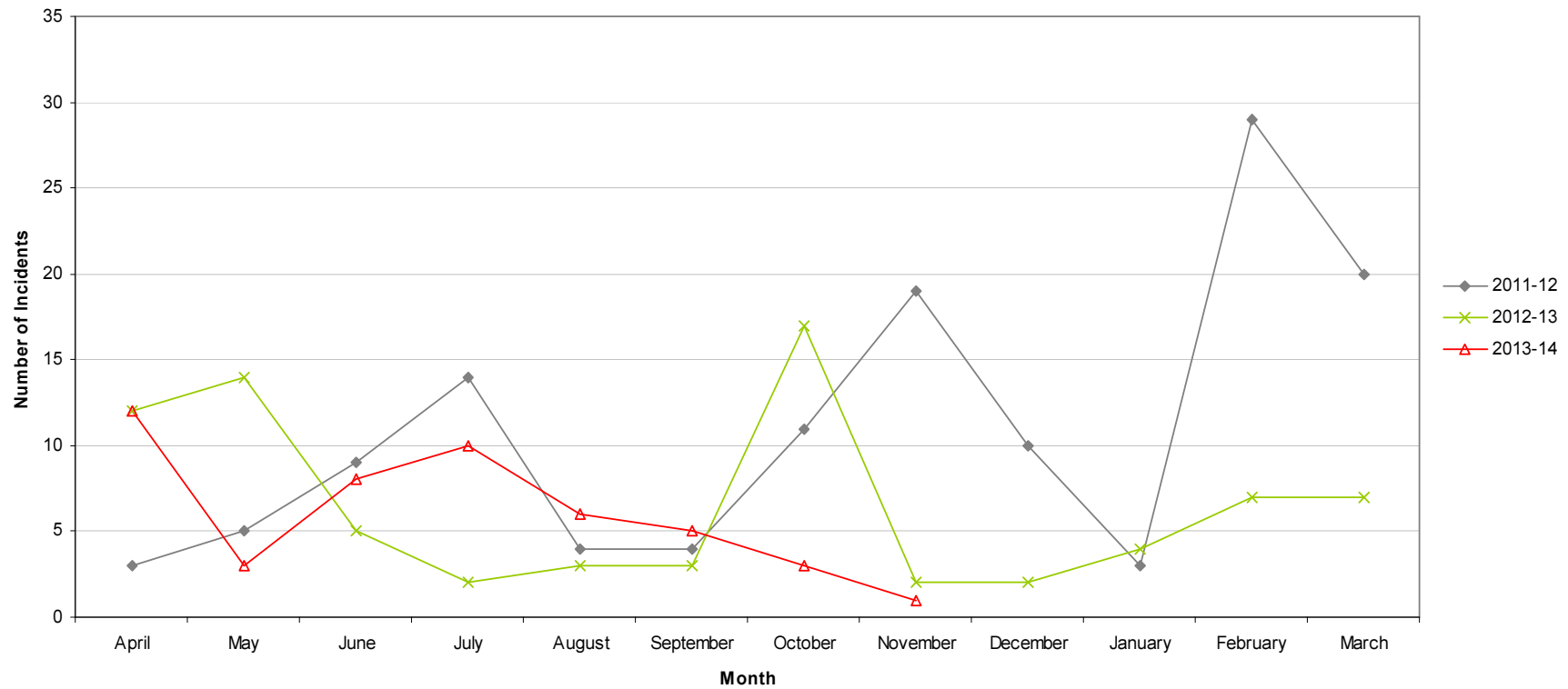


# Graffiti Reports

<b>RED</b>		
<b>AMBER</b>		
<b>GREEN</b>	<b>1 incident</b>	<b>Decrease of 1</b>

- All data refers to a comparison with the previous year's month
- It is proposed that performance over time graphs be used for each indicator
- Historic data for comparison is not available for dog fouling

Incidents of Graffiti - Sherwood

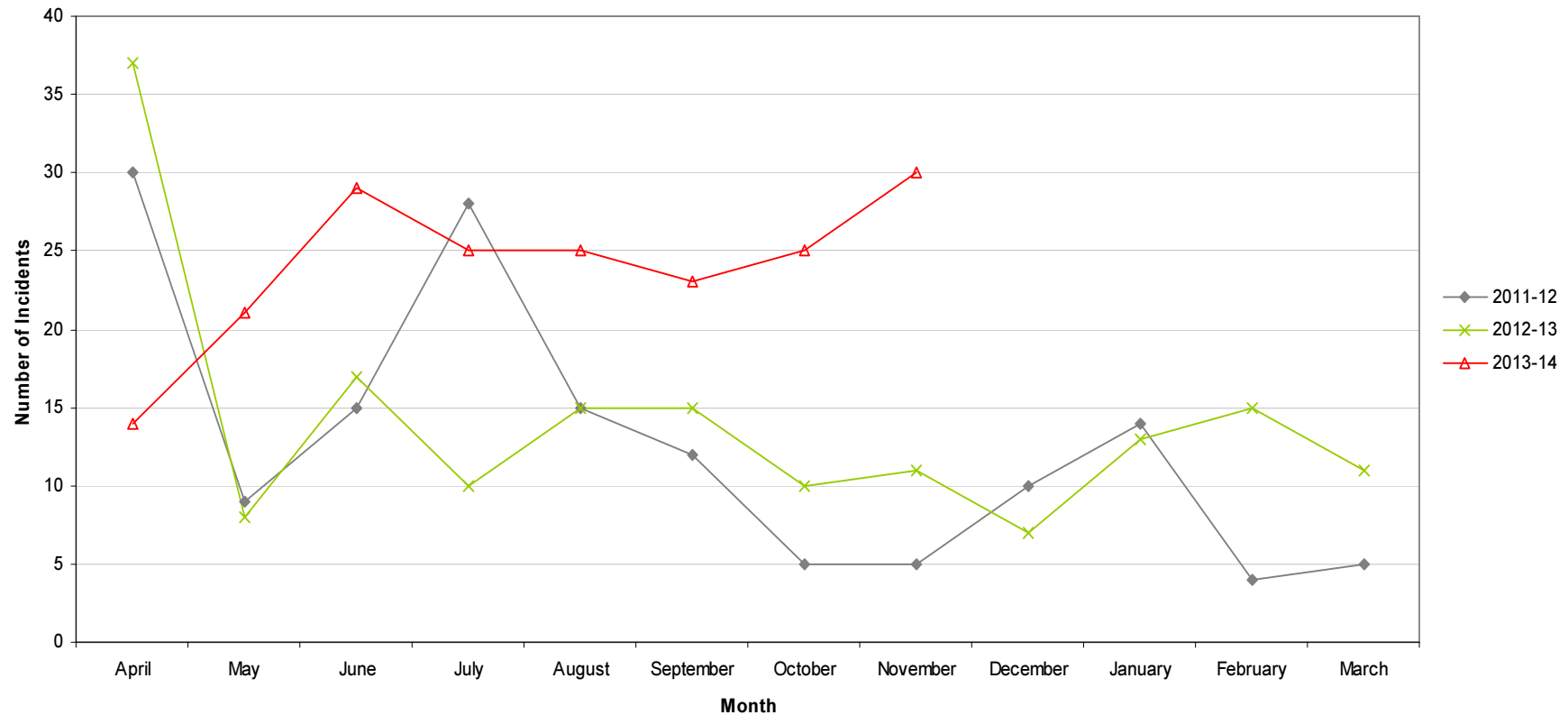


# Fly Tipping

<b>RED</b>	<b>30 incidents</b>	<b>Increase of 19</b>
<b>AMBER</b>		
<b>GREEN</b>		

- All data refers to a comparison with the previous year's month
- It is proposed that performance over time graphs be used for each indicator
- Historic data for comparison is not available for dog fouling

Incidents of Fly Tipping - Sherwood



# Housing

## Ward Report - Sherwood

Generated on: 18 December 2013







### Anti-social behaviour





Performance indicator and definition	Target	2013/14			2012/13	2011/12
		Value	Status	Long Trend	Value	Value
% of ASB cases resolved by first intervention – Central region  <i>Note: This PI monitors how many ASB cases NCH resolved on the first intervention e.g. written warning. Data for this indicator is not available by ward and is reported by Housing Office.</i>	76%	84.55%			78.92%	
% of ASB cases resolved – Central region  <i>Note: This PI measures the proportion of ASB cases NCH has successfully resolved. Data for this PI is not available by ward and is reported by Housing Office.</i>	97.8%	100%			100%	97.53%
Number of new ASB cases – Central region  <i>Note: Data for this PI is only available by Housing Office.</i>		104			144	229
Tenant satisfaction with the ASB service - Central region  <i>Note: Data for this PI is only available by Housing Office.</i>	8	7.48			6.95	6

# Housing

## Repairs







Performance indicator and definition	Target	2013/14			2012/13	2011/12
		Value	Status	Long Trend	Value	Value
% of repairs completed in target – Sherwood Ward <i>Note: This PI monitors the proportion of repairs being completed within agreed timescales.</i>	96%	97.08%			93.31%	94.1%
Tenant satisfaction with the repairs service <i>Note: Data for this PI is only available citywide</i>	8.8	8.69			8.64	8.65

## Rent Collection



Performance indicator and definition	Target	2013/14			2012/13	2011/12
		Value	Status	Long Trend	Value	Value
% of rent collected – Central region <i>Note: This PI measures the amount of rent collected (including tenant arrears) as a percentage of rent due for the current year. Data for this indicator is not available by ward and is reported by Housing Office.</i> <i>Trend shows as improving if value is over 100% as arrears are decreasing.</i>	8.3%	99%			100.5%	100.6%
% of tenancies ending due to eviction <i>Note: This PI monitors the percentage of tenants being evicted due to rent arrears and is reported citywide.</i>	0.75%	0.69%			0.55%	0.61%

# Housing

## Empty properties

Performance indicator and definition	Target	2013/14			2012/13	2011/12
		Value	Status	Long Trend	Value	Value
Average void re-let time (calendar days) – Sherwood Ward <i>Note: This PI measures how long it takes NCH to re-let empty properties from the end of the old tenancy to the start of the new tenancy</i>	25	60.78			48.59	50.25
Number of empty properties awaiting decommission – Sherwood Ward <i>Note: This PI shows the number of empty properties which will not be re-let and includes those being decommissioned and / or demolished.</i>		2			3	7
Number of lettable voids – Sherwood Ward <i>Note: Lettable voids are empty properties available for re-letting. They will receive repair work and then be re-let to a new tenant.</i>		14			15	17

## Tenancy sustainment

Performance indicator and definition	Target	2013/14			2012/13	2011/12
		Value	Status	Long Trend	Value	Value
Percentage of new tenancies sustained - Sherwood Ward <i>Note: This PI measures the number of new tenants who are still in their tenancy 12 months later.</i>	93.5%	96.92%			96.88%	

# Housing

## Key:



Performance on or exceeding target



Performance below target



Data only performance indicator



Performance has improved compared to two years ago



Performance has deteriorated compared to two years ago



Performance unchanged

Data prepared by Nottingham City Homes Performance Team

For more information please contact Jonathan Hurst, Performance Data Officer on 0115 9157368 or Marcus Parton, Performance Analyst on 0115 915715

# Methodology

Data has not been audited or verified and therefore must only be used as a reflection of crime.

Crime data and ASB calls have been extracted from the Police systems and mapped to ascertain which Ward they occurred in.

Where a ward boundary overlaps with the City Centre, crime data and ASB calls relating to the City Centre have been removed.

Where possible the most recent data is used, although for some areas this may be a month further in arrears.

Discussions continue with other agencies regarding what further data can be included.